

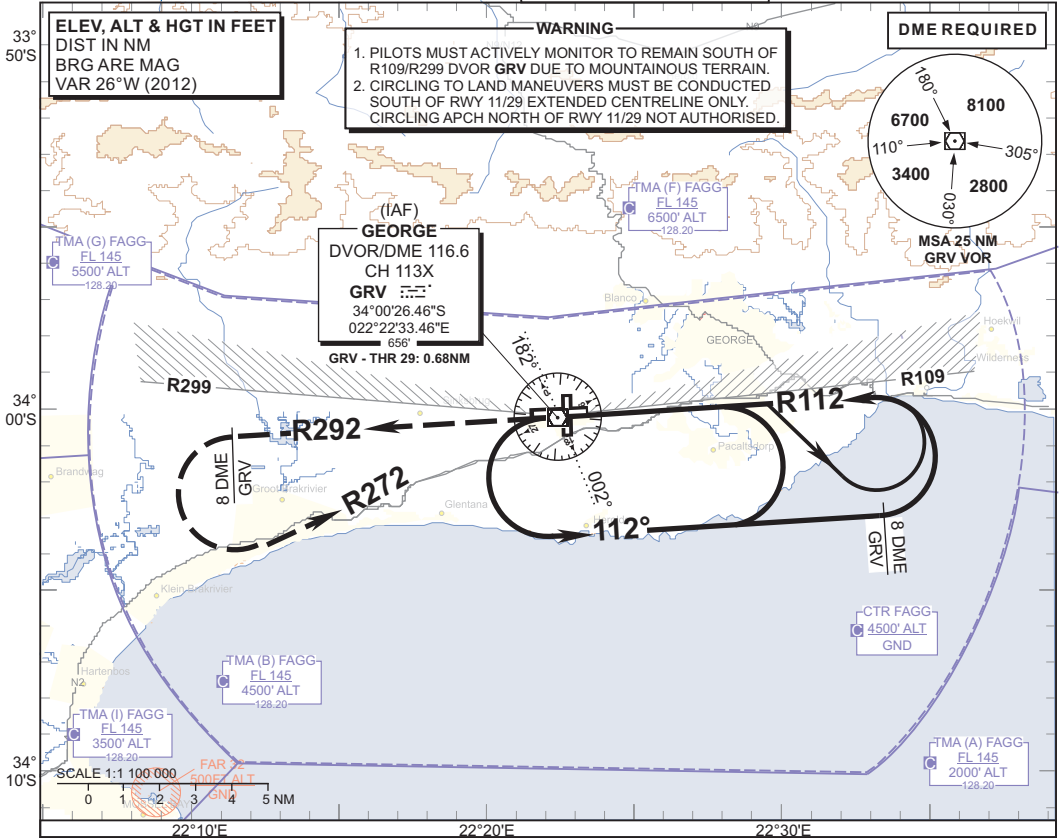
**INSTRUMENT
APPROACH
CHART**

AERODROME ELEV 648'
HEIGHTS RELATED TO
THR ELEV 648'

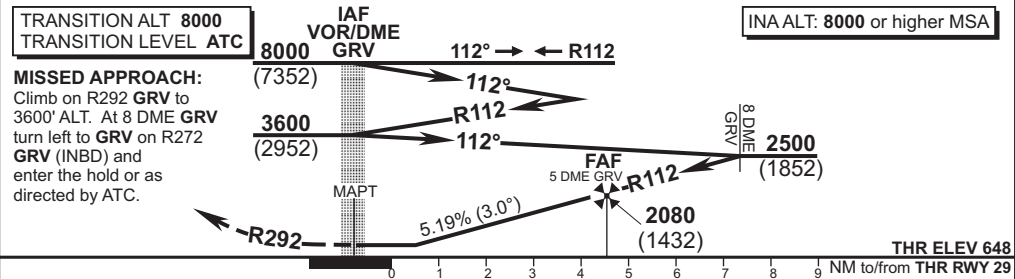
GEORGE APP: 128.20
TWR: 118.90
ALPHA OSCAR (APN): 122.65
ATIS: 126.225



**GEORGE
VOR RWY 29
CAT A - D**



GRV VOR/DME	5	4	3		
ALT (HGT)	2080 (1432)	1770 (1122)	1450 (802)		



CHANGE: Rate of descent		GS				KT	80	100	120	140	160				
		OCA (H)				A	B	C	D	5 DME GRV - THR	M:S	3:17	2:38	2:12	1:53
Straight-in Approach		VOR/DME		1070 (422)				Rate of descent		FPM	420	525	630	735	840
Circling		Circle to land South of RWY 11/29 extended centreline only				NOTE: 1. Descend in the hold to 3600' ALT. 2. Procedure turn approach applicable only within 30° of the outbound heading. Use phraseology "Request procedure turn approach". 3. Circle to land at the discretion of the pilot in command.									

EFF: 01 MAY 14